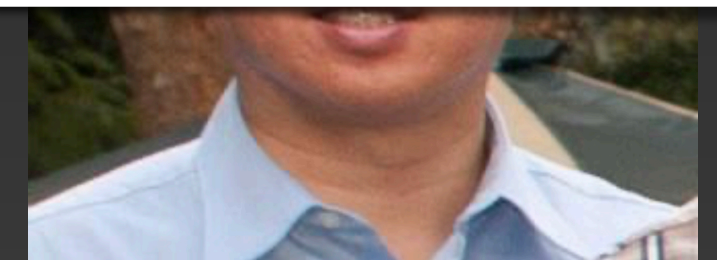
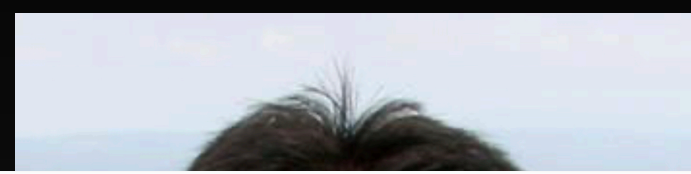


Selem of God





Genesis 1:26-27 (ESV)

26 Then God said, “Let us make man in our **image**, after our likeness. And let them have dominion over the fish of the sea and over the birds of the heavens and over the livestock and over all the earth and over every creeping thing that creeps on the earth.”

27 So God created man in his own **image**,
in the **image** of God he created him;
male and female he created them.

שֵׁלֶם *selem* of God

צֶלֶם *selem* of God

Image:

(Figuratively) illusion, resemblance; hence, a representative figure, especially an idol (statue).



Then all the people of the land went to the house of Baal and tore it down; his altars and his **images** (şelem) they broke in pieces.

2 Kings 11:18a

You shall take up Sikkuth your king, and Kiyyun your star-god—your **images** (şelem) that you made for yourselves.

Amos 5:26 (ESV)

שֵׁלֶם *selem* of God

“In the ancient world an **image** was believed to carry the essence of that which it represented.”



Image of God

Three views

- Substantive View
- Relational View
- Functional View



Substantive View

Who we are

Literal reading of the word *Tselem*.
“Focuses on the locus of the image.”

Quality or capacity of the body
(image) the natural makeup of man.

E.g. ability to reason, to innovate,
having a spirit, conscience,
emotions, will, social awareness
etc.



Relational View

How we relate

Image is reflective to the experience of relationship:

Horizontal: With other beings.

Vertical: With God (to 'know' Him)



Functional View

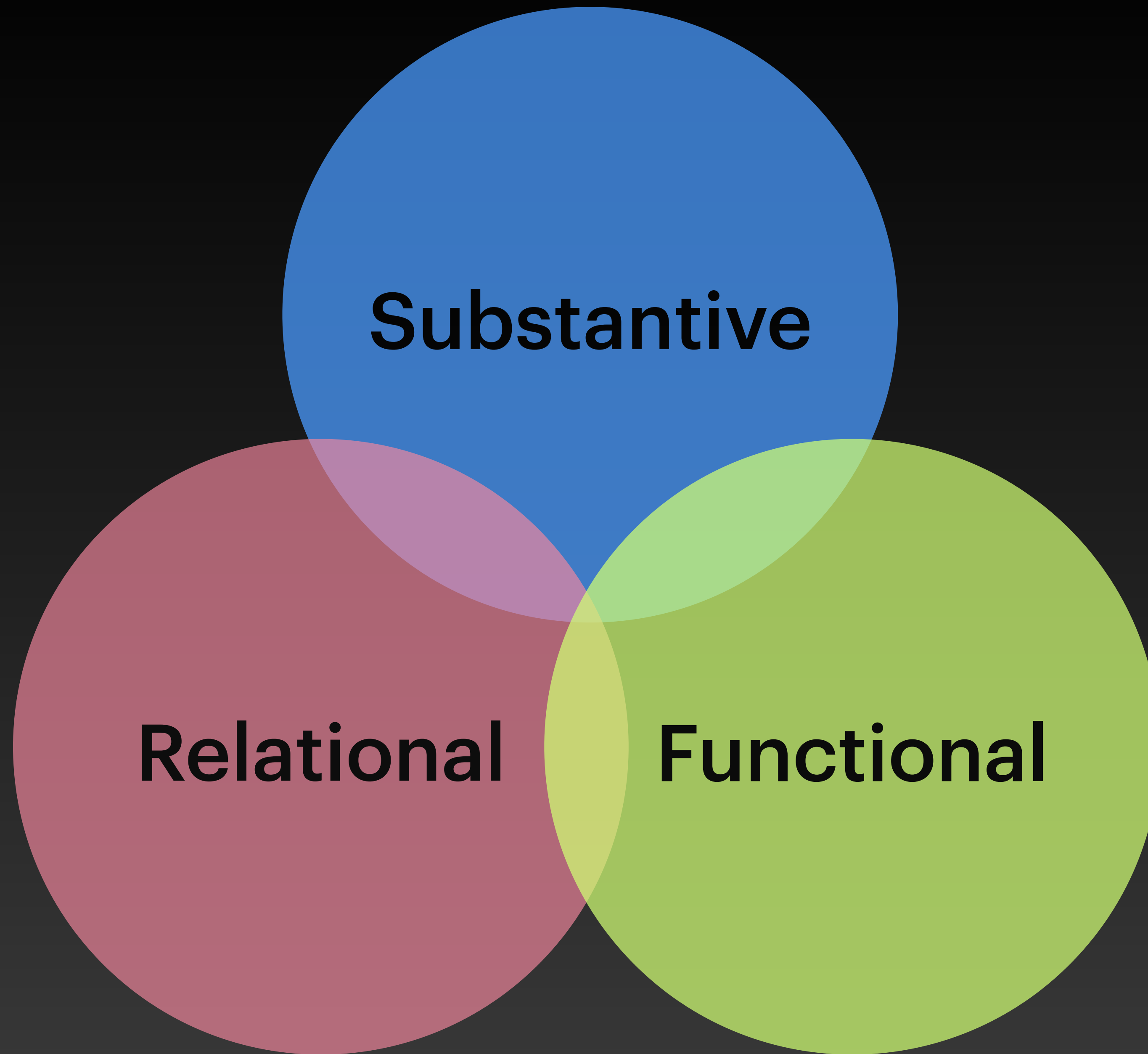
What we do

Image is something man does.

To exercise dominion over creation like God.

To “subdue”, “take dominion”
Gen: 1:26-28





Substantive

Relational

Functional



조선민주주의인민공화국

우리들의 영광스러운 선군혁명시절



“Your words are got to be so adapted and lovingly crafted, to the circumstances the needs, the capacity of the person...

It is your responsibility as the communicator to do everything you possibly can to make sure what you say is hearable.”

Rev. Timothy Keller